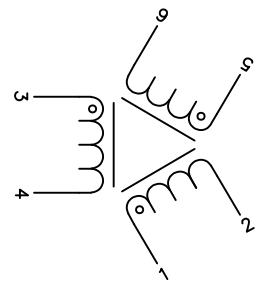


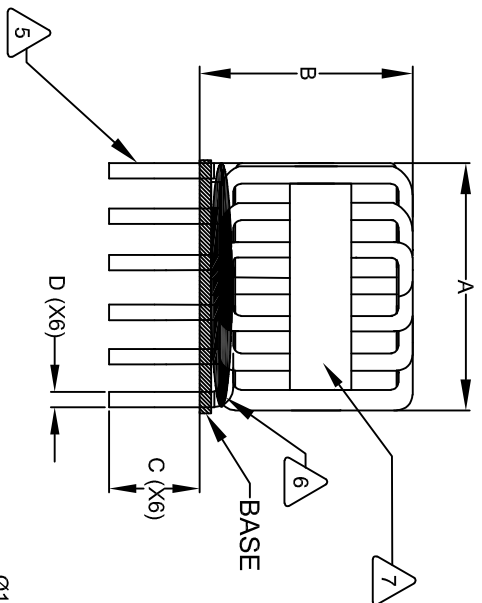
DIMENSIONAL TOLERANCE INCHES [MM]					
A(OD)	B(HGT)	C(LEAD)	D	E	F
Max	Max	Min	NOM		
1.10 [27.94]	0.95 [24.13]	0.50 [12.70]	0.045 [1.143]	0.15 [3.81]	0.42 [10.67]

REVISION HISTORY					
REV	ECN	DESCRIPTION	BY	DATE	DATE
A		PRODUCTION RELEASE	TN	01/30/19	01/30/19
B		REVISED B (HGT) DIMENSION	TN	03/17/23	03/17/23

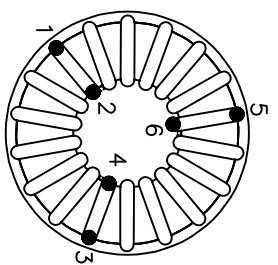


SCHMATIC

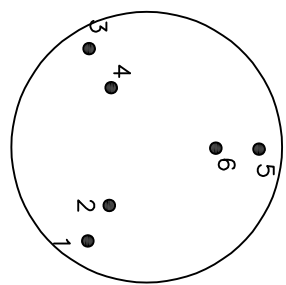
- 8 BUILT TO ROHS COMPLIANCE AND LEAD FREE
- 7 LABEL PART NUMBER, REVISION AND DATE CODE
- 6 APPLY SILICONE TO THE AREA SHOWN



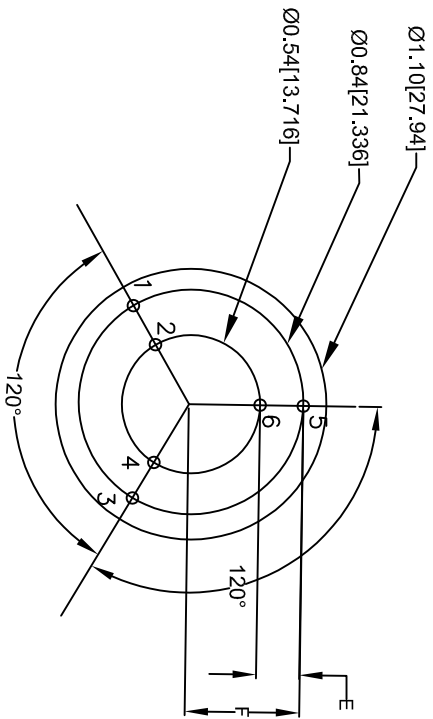
FRONT VIEW



TOP VIEW



BOTTOM VIEW



MOUNTING HOLES PATTERN (TOP VIEW)

- 5 REMOVE WIRE INSULATION (NO INSULATION IS ALLOWED BELOW THE BASE LEVEL)
- 4 WIND COILS EVENLY SPACED
- CONSTRUCTION:

WEIGHT = 28 GRAMS TYPICAL
 OPERATING TEMP RANGE = -40°C TO 125°C
 MAX TEMP RISE = 30°C
 INTERWINDING ISOLATION = 2500 VOLTS RMS
 INTERWINDING CAPACITANCE = 8.75pF TYP @ SRF
 $|Z| = 5.3 \text{ k}\Omega$ TYP @ SRF
 SRF = 1.73 MHz TYP
 DCR ON EACH WINDING = 15 mΩ MAX.
 RATED VOLTAGE = 1000 VAC OR VDC
 RATED CURRENT = 8 AMPS
 LEAKAGE INDUCTANCE = 0.7μH TYP @ 10KHz, 0.25 Vrms
 L = 5.0 mH NOMINAL @ 10KHz, 0.25 Vrms, 0 ADC
 SPECIFICATIONS AT 25°C:

- 3 SPECIFICATIONS AT 25°C:
- WIRE: UL RECOGNIZED 155°C RATED MAGNET WIRE
- CWS BYEMARK OR OTHER APPROVED PART
- CORE: NANOCRYSTALLINE OR AMORPHOUS CORE
- 1 CASE RATING CLASS B (130°C) REQUIRED
- MATERIAL: UL RECOGNIZED FOR FLAMMABILITY

NOTES: UNLESS OTHERWISE SPECIFIED, READ NOTES FROM BOTTOM TO TOP.
 CAGE CODE: 59WME2

UNLESS OTHERWISE SPECIFIED		AUTOCAD		X	
DIMENSIONING AND TOLERANCE PER ANSI Y14.5M AND [MILLIMETERS].		SOLIDWORKS			
TOLERANCE INCHES: XXX=±.0005 XX=±.001 X=±.003		DRAWN		01/30/19	
TOLERANCE METERS: XXX=±.127 XX=±.38 X=±0.30		ENGR		01/30/19	
ANGLE PROJECTION		APPR		01/30/19	
DO NOT SCALE DRAWING		SCALE		N/A	
TITLE: Nanocrystalline Inductor Three-Phase Common Mode Choke Horizontal Mount		www.coilws.com		Coil Winding Specialist Inc. 353 West Grove Ave Orange, California. 92865	
SIZE: DRG. NO. TPF-502U-B08A		REV		B	
SHEET 10F		REV		B	